



South River EMC Communicator

THROUGH THE GATE

Nestled in a remote area of Cumberland County is a path through the trees. As you come into the clearing, there sits a large, rustic, white farmhouse surrounded by a picturesque green expanse of grass that runs into tall trees. This picture perfect spot for any occasion is part of McCormick Farms.

“The farm has been family owned and operated since 1796,” said Alex Hammill, owner of McCormick Farms. “Over the years we have been in business, we have recognized the benefits of diversification.”

This drive for diversity has lead the family into agritourism, a commercial enterprise at a working farm, ranch, or agricultural plant, conducted for the enjoyment of visitors that generates supplemental income for the owner(s).

“The divide between consumers and farmers continues to grow throughout our country. We certainly recognize this and realize that we have something that is unique,” she said. “In 2018, we opened up the Carolina Barn, which rents out for weddings and other events.”

And that barn is a focal point of the wedding season. Dreamt up by Alex’s husband, Bruce, who has always had a focus on agri-tourism, the breath-taking Carolina Barn is part of a story for the family, that wasn’t being told.

continued on page B



Youth Tourists	C
Shocking Facts	D
Language Option	E
Energy Smarts	F-H

Carolina Barn, continued from page A

Wide-open green pastures with cattle and miles of dirt roads are sights and experiences that many are now only seeing in books or online.

The Carolina Barn creates a valuable business opportunity for the family, while also presenting a fun way for them to be involved with the people around them and showcase what the farm has to offer, for example, weddings.

"The venue is often the first thing a bride chooses after she becomes engaged, so we meet brides very early in their planning process," said Hammill. "Once they book our venue, the bride can choose to use our event planner, or hire a different one, and this dictates our level of involvement with planning."

If they select a different event planner, the team still helps with vendor scheduling, set-up, breakdown and clean up after the event. Staff is also on hand the day of an event for any last-minute issues that arise.

"We recognize that events done



at our venue are often special, once-in-a-lifetime events," she said. "Therefore, we make it a top priority to ensure that the event goes off without a hitch."

The venue is pretty booked through 2020, but there are some Friday and Sundays available here and there.

"We have at least one event per weekend, if not two and sometimes three," said Hammill. "Weddings have been our most common event; however, we have done numerous military balls as well."

One of their most unique facility uses was for Easter church services.

The Carolina Barn is available for rental 7 days a week, with weekends being the most popular, but also popular? Thursday nights.

"Agritourism is a new area for us and it will only help us as we continue to grow," she said. "Personally, I love being a part of a people's events. Planning and executing the events is exciting and fun, who wouldn't want that to be a part of what they do for a living?"

The family certainly has diversified, making productive use of those 5,000 acres.

McCormick Farms has a grass-fed beef operation, they grow and sell hay, rake and sell pine straw, harvest timber, as well as holding numerous land leases, one of which includes Deep Creek ATV park in Linden.

For more on what McCormick Farms offers, visit mccormickfarmsnc.com.



Billing Made Easy

Have you ever had a time where you've made a late payment?

Sign up for E-Billing and see just how easy managing your account can be. No more checks to write, stamps to buy, bills to mail.

With E-Billing you receive an e-mail reminder when your bill is ready. You can access your account to check energy use, or pay your bill 24 hours-a-day, seven days-a-week. There's no paper and your online statements are secure.



THE SOUTH RIVER EMC YOUTH TOURISTS

South River EMC is sending three rising seniors on a week-long trip to Washington, D.C., as part of the Rural Electric Youth Tour.



Jordan Burns

Jordan Burns, son of Michael and Passha Burns, is from Hope Mills. He attends Gray's Creek High and is involved with Sunshine Farms, the National Honor Society, Future Farmers of America, varsity football and track.

Lizzie Phipps, daughter of William and Elouise Phipps, lives in Newton Grove. Lizzie attends Hobpton High, where she is involved with Future Health



Lizzie Phipps

Professionals (HOSA), Future Farmers of America, Student Government Association, Key Club, Science National Honor Society, Beta Club and Future Business Leaders of America. She also takes dance and is a certified lifeguard.



Jordan Wallum

Jordan Wallum, daughter of Brian and Carrie Wallum, hails from Dunn. She is dual-enrolled at Midway High, and is on track to graduate with an associate degree. Jordan's an active member of Bible Club, Beta Club, and Fellowship of Christian Athletes, as well as playing varsity volleyball and soccer, and running winter track. She's also part of Junior Leadership through the Clinton-Sampson Chamber of Commerce.

Joining other students from North Carolina's electric cooperatives to travel to Washington, D.C., these students will meet their representatives, learn about cooperatives and visit monuments and museums.

This unique experience is offered by North Carolina's electric cooperatives. Those who attend as part of South River EMC's contingent are eligible to receive a \$1,000 scholarship from the Cooperative.

BASEBALL FANS, LISTEN UP

If you have a child between the ages of 5-13 who loves baseball, we have just the event for you!

South River EMC's partnership with the Fayetteville Swamp-Dogs allows us to send four students to each camp date they hold this summer.

That's a total of 12 students who get to spend a day at J.P. Riddle Stadium, learning from the team.

Camp dates are June 12, July 10 and July 30.

Interested in sending your child? Mail or e-mail the following information to our office: student's name, address, age, a daytime phone number and the camp dates you want the student entered.

Mail to:
South River EMC
Camp Scholarship
PO Box 931
Dunn, NC 28335

E-mail: connections@sremc.com

Submission deadlines are June 5, July 3 and July 23.

Scholarships cover only the cost of camp. Parents or guardians are responsible for transportation to and from the stadium on the camp day, which runs from 9 a.m. to 1 p.m.

Lunch and a snack will be provided. Campers may bring their own equipment, but are not required to do so.



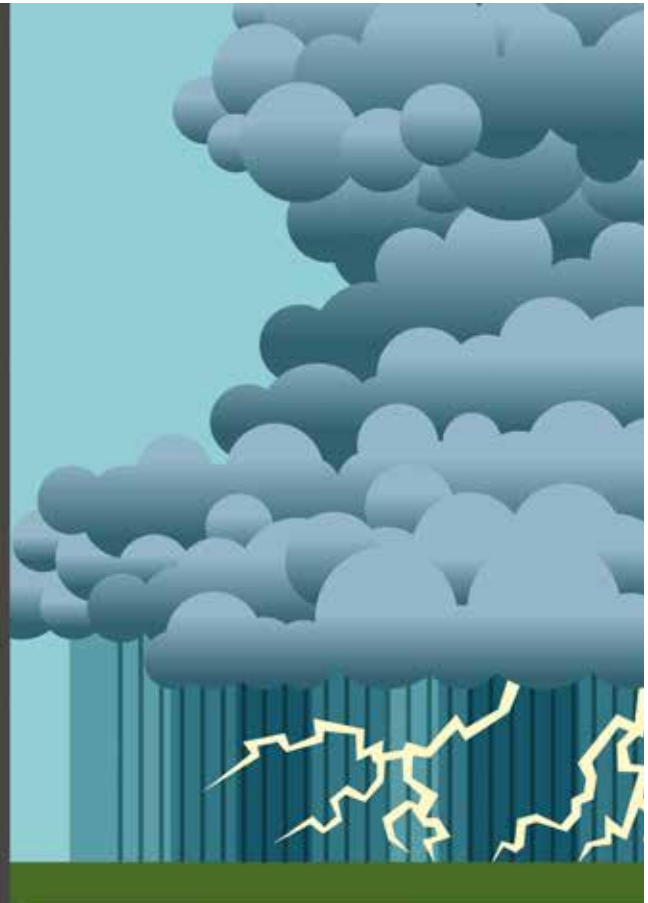
Not selected? Your child can attend camp one day for \$50, two days for \$90, or all three days for \$120.

Interested in attending camp? Register at goswampdogs.com.

Shocking Facts About Lightning

- There are 25 million cloud-to-ground lightning flashes annually in the U.S.
- Every year, 300 Americans are struck by lightning.
- Of those struck, 30 are killed and others suffer lifelong disabilities.

#StormSafety



LANGUAGE OPTION IN MEMBER PORTAL

When you go to login to your South River EMC account, you might notice the green button in the left top corner that prompts you to select a language.

This new option allows members to access their account in English or Spanish.

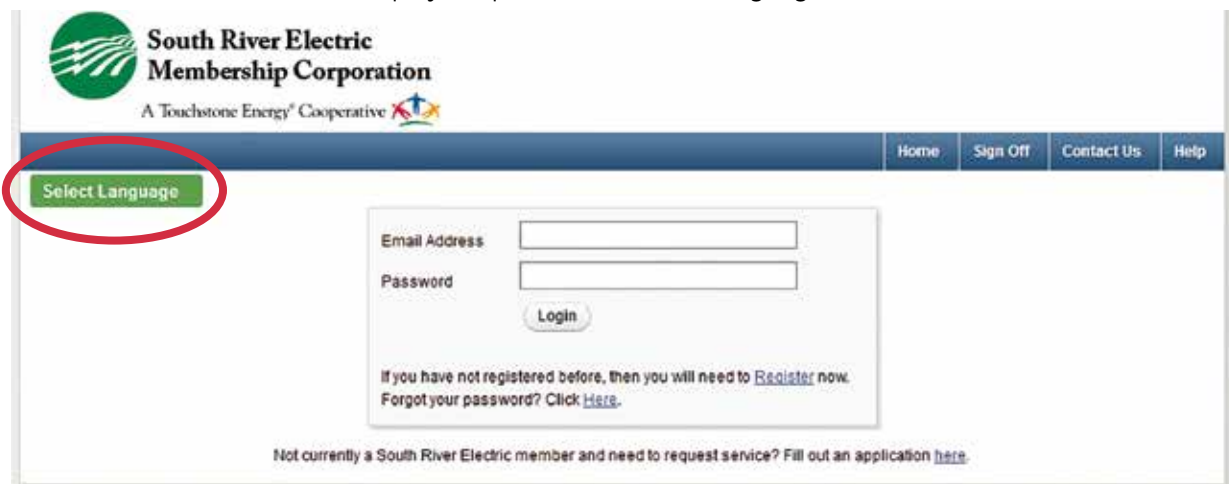
If you wish to continue in English, do not change anything. If you'd like your account to display in Spanish,

click the green, "Select Language" button, to select Spanish.

This option isn't limited just to our online bill payment site, you can also view our entire website, sremc.com, in other languages. Just

look for the "select language" drop-down menu under "pay my bill" and "careers" at the top right of the page.

If you have any questions, please contact South River EMC at 910.892.8071.



ALL THE SMILES OF GRANT WRITING

Grant writing can be tough, but think of your students. Do you remember who smiled the biggest when they understood a concept, the excitement even?

Not all students learn in the same way, however many of the teaching methods to reach these students can get expensive, and aren't always in the school's budget.

That's where Bright Ideas can help. The program, which is celebrating 25 years, offers grants for

innovative, classroom-based ideas to educators in public K-12 schools.

South River EMC offers grants for up to \$2,500 and funds up to \$50,000 in grants each year.

Educators who apply before August 15 are entered to win the early bird prize, however, if your grant isn't ready by then, just be sure it is submitted by September 23.

Grants can be for anything, except profession-

al development. Simply visit ncbrightideas.com to begin writing your grant proposal. South River EMC only accepts grants in this manner, we do not accept handwritten applications.

Since 1994, educators statewide have received \$12.2 million from Bright Ideas, using it to fund over 11,600 projects affecting 2.3 million students statewide.

Have a question, or looking for more information? Visit sremc.com, or e-mail sremc@sremc.com





Purchasing energy-efficient products is the start, using them efficiently adds to savings.

Energy Savings And Summer Can Mix!

It's summer, bring on those pool days! Don't let them cost you though, a variable- or two-speed pool pump, could help.

Using a more efficient pump, and practicing efficient use of that pump can help save money and energy. For details on the

rebate offered by South River EMC on variable- or two-speed pool pumps, visit sremc.com or call 910.892.8071x 2152.

Energy Star Appliances—Savings Per Use

If you need a new appliance, select an Energy Star certified one.

Energy Star certified appliances use less energy and water, and that means savings!

How much energy saved

depends on the appliance, for example, your washer and dryer use more energy when running, but very little when simply plugged in. However, your refrigerator always uses electricity, so a nine percent savings adds up too.

When you have to replace appliances, do so with Energy Star. If you purchase an Energy Star certified refrigerator, clothes washer, dryer, or dehumidifier, you could be eligible for a rebate. For details visit sremc.com or call 910.892.8071 x 2152.

Water Heating Is An Important Place To Save Energy

Do you ever think about how much it costs to heat your water? As long as it's warm enough for showers, that's all that matters, right?

Not completely! With water heating being the second highest energy cost, the type of water heater you have can affect cost.

For efficiency, consider a heat pump water heater. This heater uses warm air around it to warm your water, making it two to three times more efficient. With solar water heating you use the sun to heat your water, an efficient proposition if you have enough sun.

Find what type of system works best for you. Remember, South River EMC offers a \$150 rebate on solar water heaters, and a \$200 rebate on heat pump water heaters. For details, visit sremc.com or call 910.892.8071 x 2152.

Control The Thermostat—Even When Away

Do you ever come home and find someone has touched the thermostat?

Combat “unwise” energy choices with a smart thermo-

stat. With the ability to look at trends, you can see how much that adjustment affects energy use, and you can correct it from afar using Wi-Fi.

South River EMC offers a rebate to members who install a smart thermostat, visit sremc.com or call 910.892.8071 x 2152.

Wrapped Up In Savings

Insulate and weather strip, because it can help comfort and cost if spots in your home are warmer in the summer and cooler in the winter than the rest of the house.

Install insulation evenly in your attic, or under the floor, and

make sure to weatherize and caulk areas where air can move in and out of your house (air infiltration).

Save because you aren’t trying to make your home comfortable by adjusting the thermostat. Not just that, but

also receive a rebate from South River EMC for your home improvements.

For information, visit sremc.com or call 910.892.8071x 2222.

Don’t Sweat The Summer For Savings

Cooling your home is important during summer. The best way to cool efficiently isn’t to turn off the air conditioner and sweat out the summer.

Turn up the thermostat, use the fans and maybe even replace your heating and cooling system.

It might seem drastic, but the older and more inefficient a

heating and cooling unit is, the more it costs you to run. You’re uncomfortable, the unit works overtime, all ending in higher cost.

Replacing an older heat pump with a 17 SEER or greater, air source, mini-split, or geothermal system, can help improve comfort and cost. The higher

the seasonal energy efficiency ratio, or SEER, rating the better the system is at meeting the heating or cooling demand. Find out how much a new system could save you by using the heat pump calculator at sremc.com. You can also read up on the rebates offered, or call 910.892.8071x 2152.



Ceiling fans help distribute the cold air from your heat pump, to help hold down costs.

Opening Interior Doors and Supply Vents

Should I open or close supply vents? Should I open or close interior doors? This is a question people might ask themselves when trying to lower their electric bill. Several theories have suggested that shutting a door to a room that is not being used will save money. In reality, closing off rooms causes your heating and cooling unit to work harder. The same goes for the supply vents in your home.

Heating and cooling systems are balanced whole-house units. These systems are designed to heat and cool the entire home, not just parts of it. Typical houses will have one or more return vents and numerous supply vents throughout the home. Since the system is designed as a whole, shutting doors to rooms where vents are located is disrupting the system's operation. When the door is shut to a room where a supply vent is located, the room becomes pressurized and less air gets back to the return vents. The system becomes imbalanced and doesn't operate as designed. This condition can cause the system to run longer than normal, increasing electric bills and maintenance on the system. The more interior doors that are shut, the worse the effect it will have on a system.

The same can be said about supply vents in a home. This also goes back to the design of the heating and cooling system. When a system for a home is calculated, the size of ductwork and the amount of air that goes in and out of a system is taken into consideration. When a supply vent is closed, it builds pressure in the ductwork. If the ductwork is already leaky, this can increase the size of holes and leaks. With more supply vents shut, the more imbalanced the system will become. The system has to put in extra effort to distribute air throughout the home because of the pressure buildup.

Pressure problems in a home can cause the home to draw in dirty, unconditioned air or force out heated or cooled air. This can cause higher bills, decreased comfort and poor air quality. How does a homeowner know if there is a pressure problem? Look for darkening around the top or bottom of doors. This is especially noticeable if you burn candles in your home. There is also an increased burst of air around doors or they become harder to open or close suddenly.

It is also important to make sure none of the supply vents



Advise Guy Eric Gainey

are blocked by furniture or any other objects in the home. Objects blocking vents can have the same type of effect on the system and energy bills as closing them manually. Keeping the interior doors and supply vents open allows the system to distribute air flow throughout the house as it was designed to do. In return, it can help you save money and energy. Ensuring that vents and interior doors stay open is an easy and simple task that requires no money and minimal effort.

South River EMC
Communicator



Follow Us! [southriveremc](https://www.southriveremc.com) A Touchstone Energy® Cooperative 

PO Box 931
Dunn, NC 28335
910.892.8071
800.338.5530
www.sremc.com